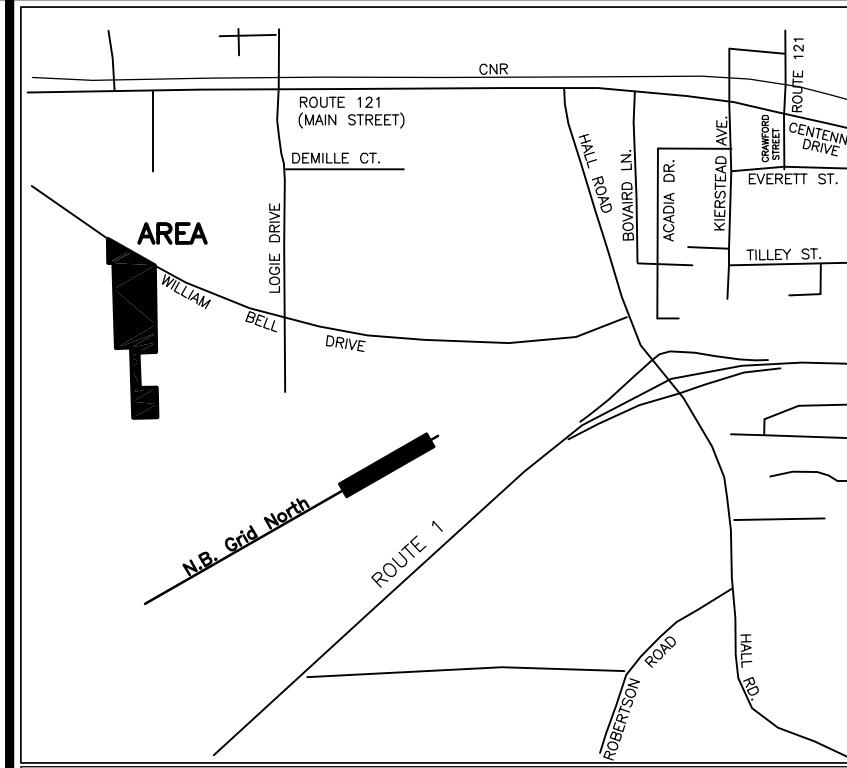
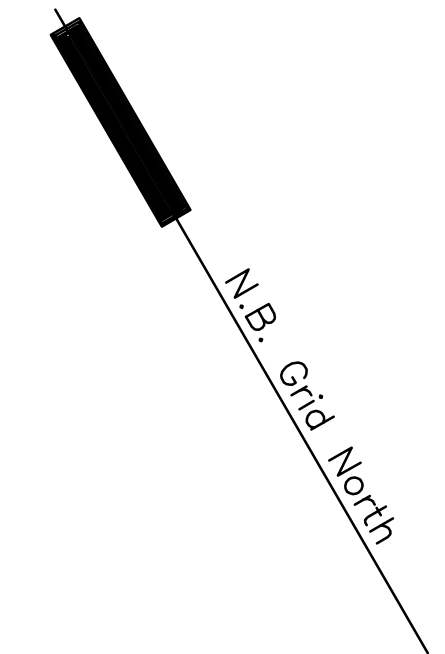


New Brunswick Grid Co-ordinate Values							
Point	Easting	Northing	Monument	Point	Easting	Northing	Monument
1	2551983.864	7390029.038	SMS	277	2552192.387	7389927.097	CALC-TREE
2	2551992.752	7390043.764	SMS	526	2552071.832	7390156.767	SMS
6	2552473.953	7389849.622	SMS	795	2551915.058	7390070.566	SMS
7	2552502.122	7389897.797	SMS	801	2552118.696	7390051.559	Rad.Pt.
9	2552001.574	7390047.997	SMS	804	2552285.958	7390027.689	SMS
182	2551134.007	7391676.727	Rad.Pt.	807	2552072.923	7390096.762	CALC
200	2552046.169	7390141.229	SMS	813	2552184.316	7390163.782	Rad.Pt.
201	2552028.916	7390131.110	SMS	827	2552108.600	7390034.294	CALC
202	2552028.620	7390060.977	SMS	837	2552055.785	7390086.451	CALC
203	2551936.694	7390112.897	SMS	840	2552061.978	7390076.986	SMS
204	2552114.159	7390031.043	SMS	841	2551963.228	7390094.897	SMS
205	2552088.782	7389987.644	SMS	842	2552089.201	7390047.794	SMS
206	2552140.056	7390015.900	SMS	843	2552045.613	7390012.872	SMS
207	2552114.683	7389972.507	SMS	941	2552275.587	7389936.652	CALC
208	2552165.954	7390000.757	SMS	21032	2553273.147	7387737.146	NBCM (Adj)
209	2552140.584	7389957.370	SMS	21033	2553180.074	7388077.716	NBCM (Adj)
210	2552191.851	7389985.614	SMS	21467	2552743.265	7390893.367	NBCM (Adj)
211	2552166.486	7389942.234	SMS	21468	2552070.885	7390164.894	NBCM (Adj)
212	2552217.749	7389970.471	SMS	26913	2553698.380	7390785.522	NBCM (Adj)
213	2552192.892	7389927.960	SMS				
214	2552243.647	7389955.328	SMS				
215	2552218.288	7389911.960	SMS				
216	2552269.544	7389940.185	SMS				
217	2552244.189	7389896.823	SMS				
237	2552417.957	7389948.344	SMS				
238	2552389.207	7389899.175	SMS				
245	2552317.649	7390008.586	SMS				
246	2552288.206	7389958.233	SMS				
247	2552106.092	7390136.115	SMS				
248	2552078.287	7390088.562	SMS				
249	2552131.787	7390120.625	SMS				
250	2552099.443	7390065.310	SMS				
251	2552157.483	7390105.136	SMS				
252	2552124.382	7390048.528	SMS				
253	2552183.178	7390089.646	SMS				
254	2552150.879	7390034.409	SMS				
255	2552208.873	7390074.157	SMS				
256	2552177.375	7390020.290	SMS				
257	2552234.568	7390058.668	SMS				
258	2552203.872	7390006.171	SMS				
259	2552260.263	7390043.178	SMS				
260	2552230.368	7389992.052	SMS				
261	2552256.266	7389976.909	SMS				

Scale Factor = 1.000000

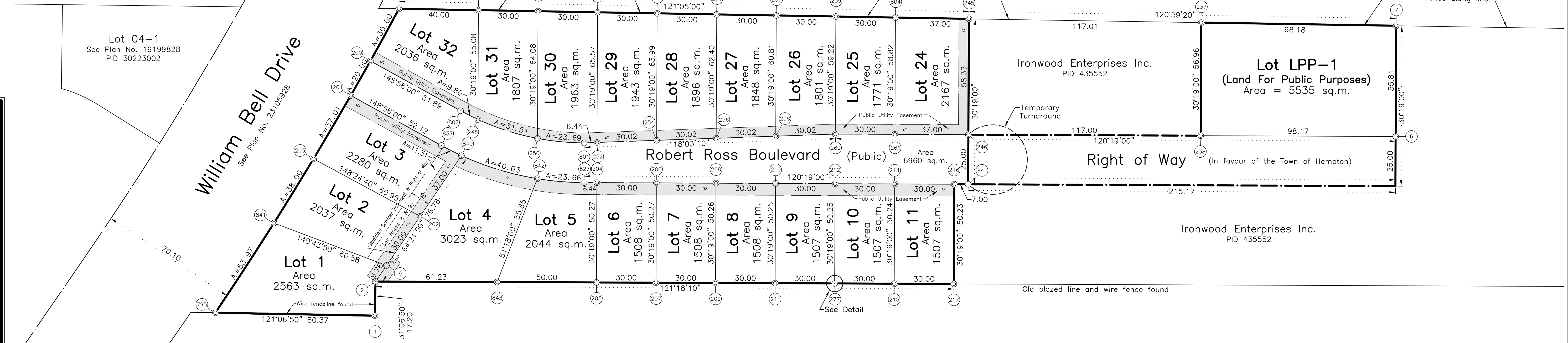
Ellen Cecelia Hanlon
Document 242967, Volume 611, Page 921
PID 193870



- Key Plan**
Scale = 1:25,000
- LEGEND:**
- SMF - Standard survey marker found
 - ⊙ SMS - Standard survey marker set
 - RIBF - Round iron bar found
 - IBF - Square iron bar found
 - IPF - Iron pipe found
 - CALC - Calculated point
 - ▲ NBCM - N.B. Co-ordinate Monument
 - sq.m. - Square metres
 - A - Arc
 - R - Radius
 - Rad.Pt. - Radius point
 - ⊖ - Centreline
 - Line not to scale
 - x-x- Fence
 - PID - Parcel identifier number
 - Adj - Adjusted network
 - ⊙ - Tabulated co-ordinate reference
 - A.N.B.L.S. - Association of N.B. Land Surveyors

- NOTES:**
1. Azimuths and Co-ordinate values refer to the NEW BRUNSWICK GRID CO-ORDINATE SYSTEM (Adjusted Network - Adj) and were derived from the tabulated New Brunswick Co-ordinate Monuments. Computations performed and co-ordinate values shown are based on the New Brunswick Stereographic Double Projection and the NAD83 (CSRS) ellipsoid.
 2. Azimuths are rounded to the nearest 10 seconds.
 3. Distances are in METRES and are rounded to the nearest CENTIMETRE.
 4. Lands dealt with by this plan are bounded thus
 5. Peripheral information and adjacent names were derived from various sources and should be verified.
 6. All plans and documents referenced are recorded in the Registry Office of the County of Kings or in the Provincial Land Titles Registry.
 7. Field survey was completed
 8. The 10 metre wide Right of Way across Lot 3 is in favour of Lots 1 & 2 and the same Right of Way continuing over Lot 2 is in favour of Lot 1.
 9. This easement vests in the Town of Hampton pursuant to Section 56(4.01) of the Community Planning Act and Regulation 84-217.

APPROVALS:



Lot 04-1
See Plan No. 19199828
PID 30223002

Ironwood Enterprises Inc.
PID 435552

Lot LPP-1
(Land For Public Purposes)
Area = 5535 sq.m.

Robert Ross Boulevard (Public)

Right of Way (In favour of the Town of Hampton)

Ironwood Enterprises Inc.
PID 435552

Hampton Golf Club
See Plan No. 3731
Document 151600, Volume 188, Page 978
PID 435537

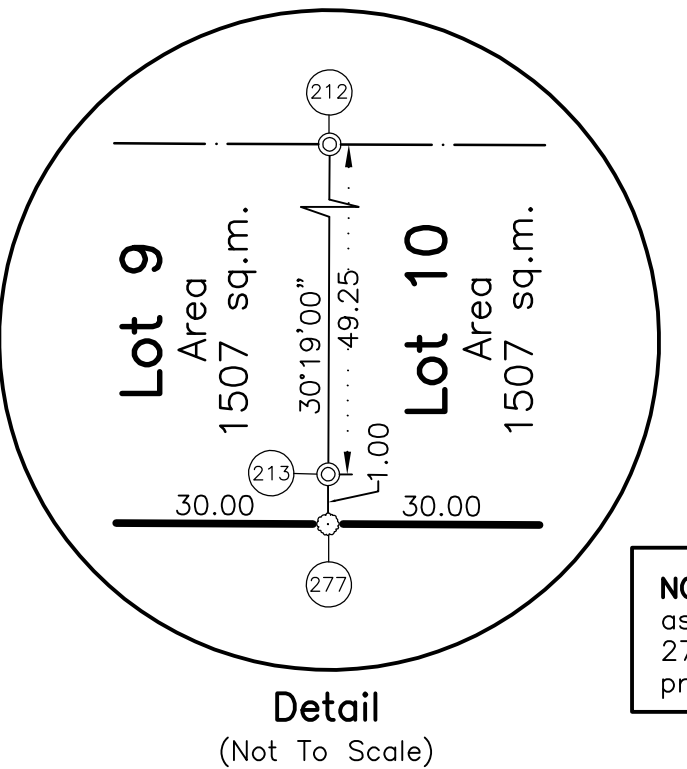
PUBLIC UTILITY EASEMENTS:

Public Utility Easements

These easements vest in Bell Aliant Regional Communications, Limited Partnership and the New Brunswick Power Distribution and Customer Services Corporation pursuant to Section 56(4.02) of the Community Planning Act and Regulation 84-217. The easements shown on this plan conform to the requirements of the following Utility Companies:

.....
For Bell Aliant Regional Communications, Limited Partnership

.....
For The New Brunswick Power Distribution and Customer Services Corporation



NOTE: Point 213 (SMS) is placed as witness bar on sideline. Point 277 is a large yellow birch at the property corner.

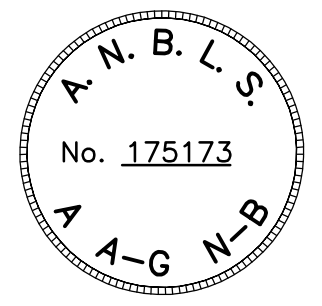
LAND TITLES DATA:
PID 435552

Owner: Ironwood Enterprises Inc.
Document 24373103
Registered: 2007-08-22

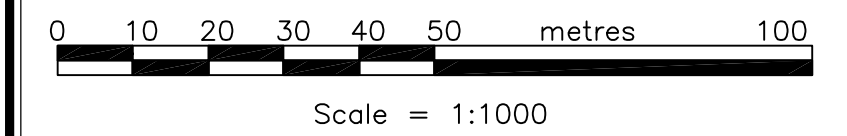
SIGNATURE OF OWNER:

.....
Scott Robinson - President, Ironwood Enterprises Inc.

Curve Data Table						
Point	Point	Arc	Chord	Chord Azimuth	Radius	Rad.Pt.
200	526	30.00	30.00	58°48'20"	1786.00	182
201	200	20.00	20.00	59°36'30"	1786.00	182
203	201	37.01	37.01	60°31'20"	1786.00	182
248	250	31.51	31.44	137°42'10"	130.00	813
250	801	23.69	23.66	123°32'10"	130.00	813
795	841	53.97	53.97	63°12'00"	1786.00	182
807	248	9.80	9.80	146°48'20"	130.00	813
837	840	11.31	11.31	146°48'20"	150.00	813
840	842	40.03	39.92	137°00'00"	150.00	813
841	203	38.00	38.00	61°43'30"	1786.00	182
842	827	23.66	23.64	124°50'00"	150.00	813



**Subdivision Plan
The Links at Hampton
Subdivision-Phase One**
Town of Hampton
Kings County, N.B.



**KIERSTEAD QUIGLEY
and ROBERTS Ltd.**
Saint John, New Brunswick

Dated:
April 8, 2008
Steven R. Saunders, NBSL #352